

# CORNER RECORD

Agency Index DPW #19-041

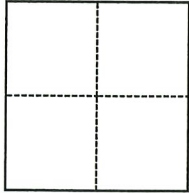
Document Number ADJ 121-130-27 B

City of NICASIO County of MARIN, California

Brief Legal Description IRON PIPE SHOWN ON MAP 7 OS 14.

### CORNER TYPE

### COORDINATES (Optional)



- Government Corner
- Meander
- Rancho
- Control
- Property
- Other

Date of Survey MARCH 15, 2019

N. \_\_\_\_\_ E. \_\_\_\_\_

Elevation \_\_\_\_\_

Units  Metric  U.S. Survey Foot

Horizontal Datum \_\_\_\_\_

Zone \_\_\_\_\_ Epoch Date \_\_\_\_\_

Vertical Datum \_\_\_\_\_

Complies with Public Resources Code §§8801-8819

Complies with Public Resources Code §§8890-8902

PLS Act Ref.:  8765(d)  8771  8773  Other:

Corner/Monument:  Left as found  Established  Rebuilt  Pre-Construction  
 Found and tagged  Reestablished  Referenced  Post-Construction

Narrative of corner identified and monument as found, set, reset, replaced, or removed:

See sheet #2 for description(s):

FOUND IRON PIPE SHOWN ON MAP 7 OS 14 NEAR LOT 8 AS SHOWN ON MAP 3 PM 55. SET FOUR REFERENCE TIES; RE-ESTABLISHED WITH COUNTY OF MARIN WELL MONUMENT PER UCS DWG #300. (SEE ATTACHED SKETCH) NO DETERMINATION WAS MADE AS TO THE VALIDITY OF THE MONUMENT SHOWN HEREON OR ITS RELATION TO PROPERTY LINES IN THE AREA.

### SURVEYOR'S STATEMENT

This Corner Record was prepared by me or under my direction in conformance with

the Professional Land Surveyors' Act on 06/20/22

Signed [Signature] P.L.S. or R.C.E. No. 9292



### COUNTY SURVEYOR'S STATEMENT

This Corner Record was received MAY 9, 2019

and examined and filed 6/20/22

Signed T.W. Park P.L.S. or R.C.E. No. 8176

Title County Surveyor

County Surveyor's Comment

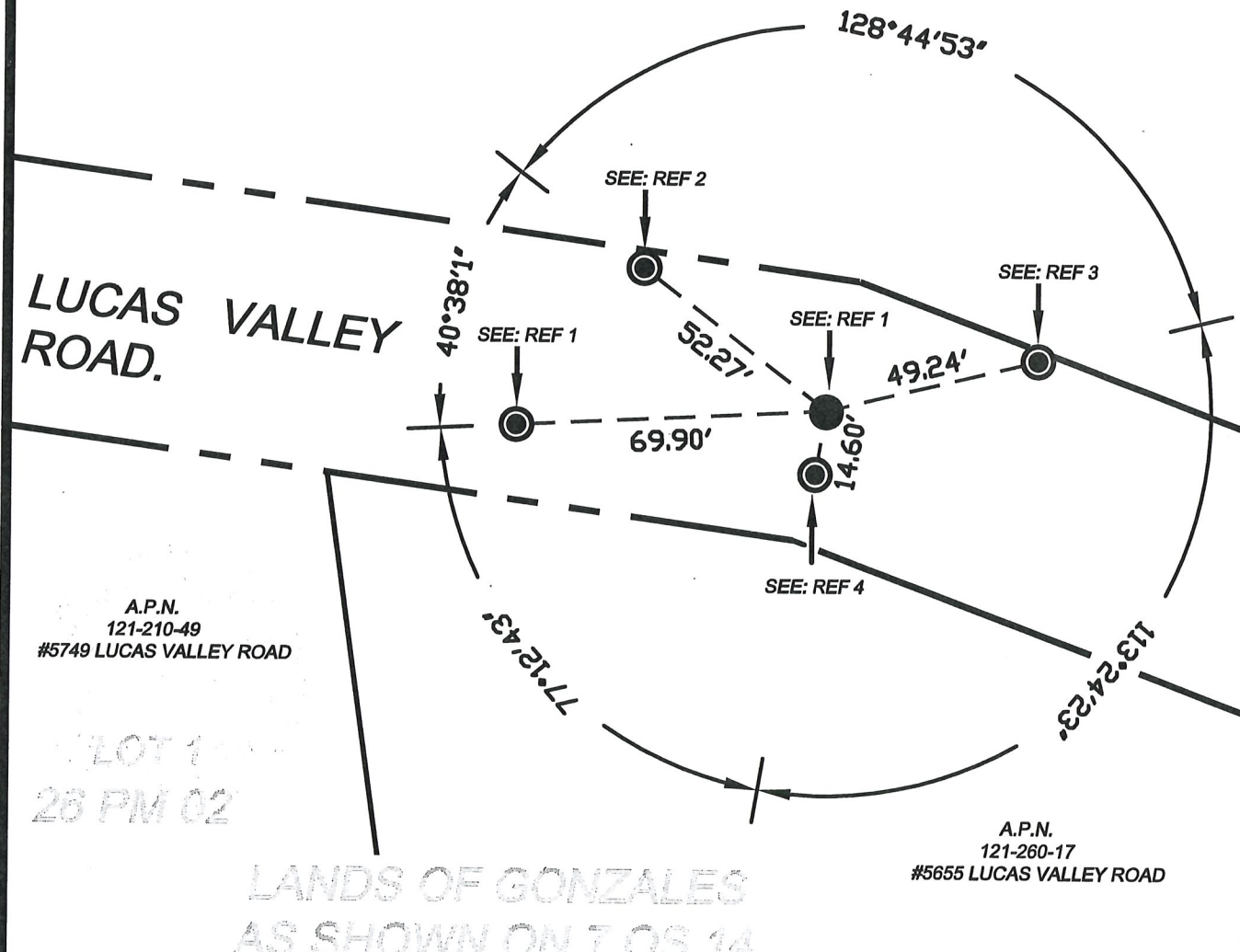




A.P.N.  
121-130-27  
#5858 LUCAS VALLEY ROAD

7 OS 14

LANDS OF SOARES  
AS SHOWN ON 7 OS 14



A.P.N.  
121-210-49  
#5749 LUCAS VALLEY ROAD

LOT 1  
26 PM 02

LANDS OF GONZALES  
AS SHOWN ON 7 OS 14

A.P.N.  
121-260-17  
#5655 LUCAS VALLEY ROAD

- REF 1: FOUND IRON PIPE AND TAG IN MONUMENT WELL STAMPED R.E. NO.8424 PER 7 OS 14 REPLACED WITH STANDARD COUNTY MONUMENT PER UNIFORM CONSTRUCTION STANDARDS DRAWING #300.
- REF 2: SET HUB AND WASHER STAMPED "MARIN COUNTY SURVEYOR" ON SHOULDER OF ROAD.
- REF 3: SET NAIL AND BRASS TAG STAMPED "MARIN PW" ON SIDE OF TREE.
- REF 4: SET NAIL AND WASHER STAMPED "MARIN COUNTY SURVEYOR" IN ASPHALT DRIVEWAY.
- REF 5: SET HUB AND WASHER STAMPED "MARIN COUNTY SURVEYOR" ON SHOULDER OF ROAD.

LOT 8  
3 PM 55

COUNTY OF MARIN  
DEPARTMENT OF PUBLIC WORKS  
SURVEY SECTION

SCALE: 1"=40'

JOB No. 2018-026  
CORNER RECORD